

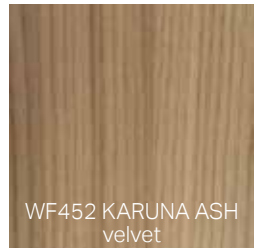
arauco PRISM



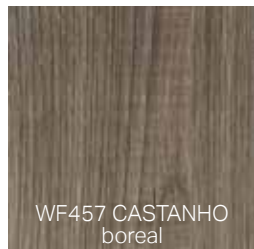
WF459 ABIQUA PINE
boreal



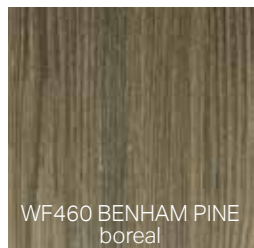
WF458 PRESTEN ASH
velvet



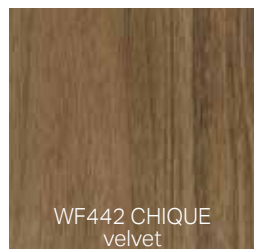
WF452 KARUNA ASH
velvet



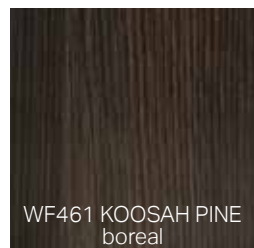
WF457 CASTANHO
boreal



WF460 BENHAM PINE
boreal



WF442 CHIQUE
velvet



WF461 KOOSAH PINE
boreal

SLAB & SHAKER DOORS

Order through



WF452 KARUNA ASH
velvet



WF459 ABIQUA PINE
boreal



WF460 BENHAM PINE
boreal

1/4" glass insert

- PRISM TFL 3/4" thick doors are available in slab and shaker style. Shaker doors have a 3" style and rail, with a 1/4" thick MDF core center panel
- Available in two finishes, velvet and boreal
- TSCA Title VI compliant particle board (PB) core

- Texture and pattern matching hot air/laser edgebanding results in an encased water-resistant seamless edge

- Manufactured in the USA

*Shaker style doors under 8" tall will be a slab door

Actual colors may differ from printed reproductions. For best comparison, request product samples.

DOORS MANUFACTURED BY: _____

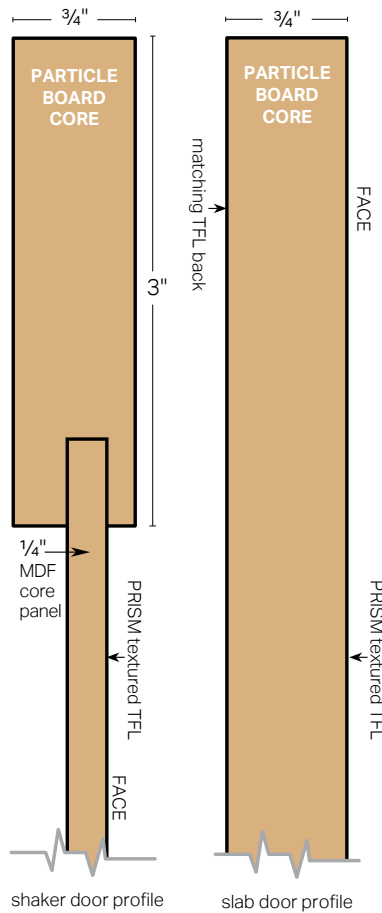


1369 S. Bertelsen Rd. Bldg C · Eugene OR 97402
sales@cascade-distribution.com · 541-228-9757



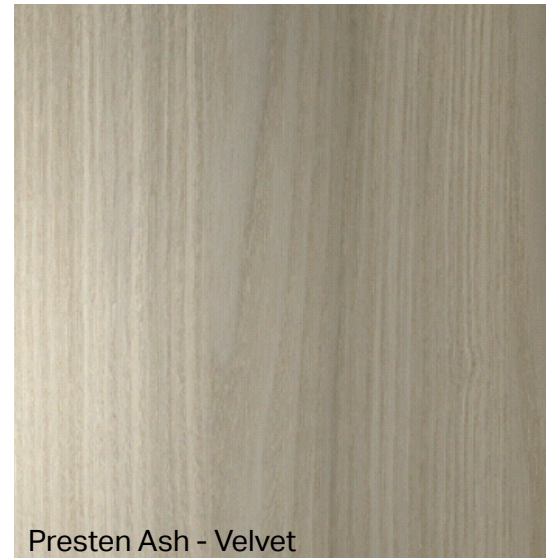
WF460 BENHAM PINE
boreal

arauco
PRISM



Koosah Pine - Boreal

Boreal: Tactile, striated, deep, rich woodgrain



Presten Ash - Velvet

Velvet: Warm, super-smooth, matte finish

DOORS MANUFACTURED BY: _____



1369 S. Bertelsen Rd. Bldg C · Eugene OR 97402
sales@cascade-distribution.com · 541-228-9757